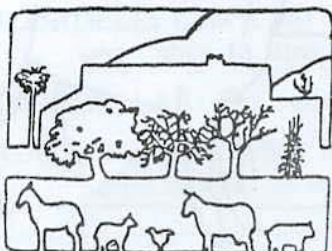
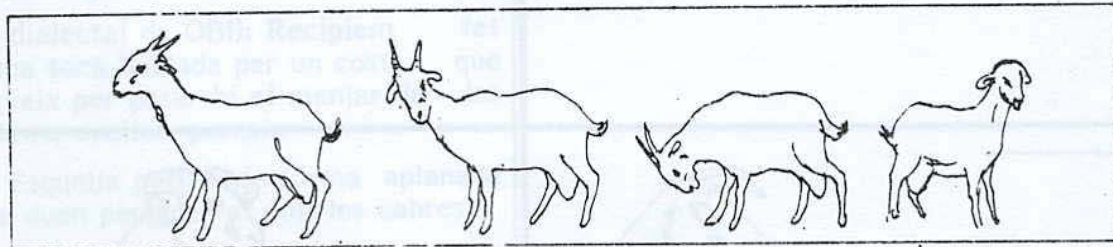
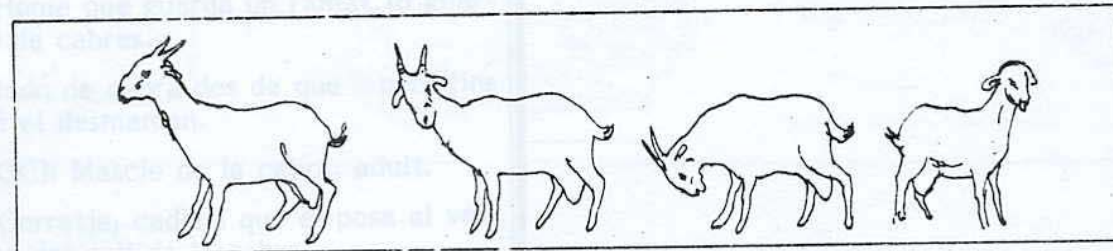
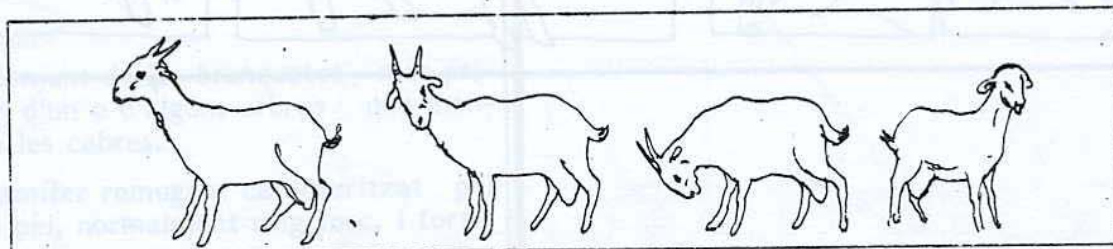
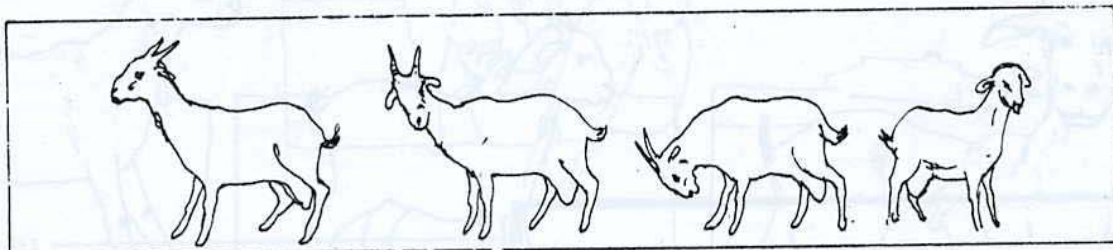
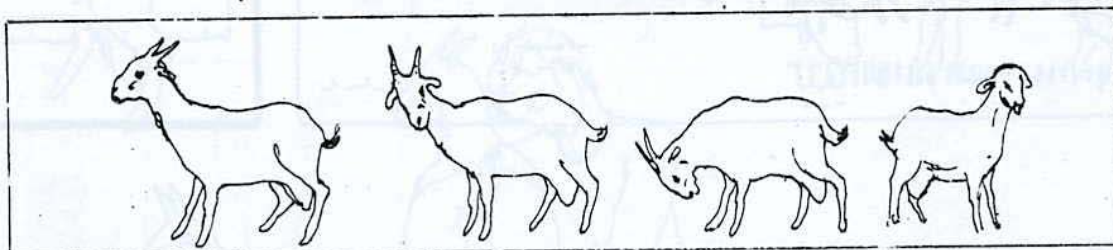
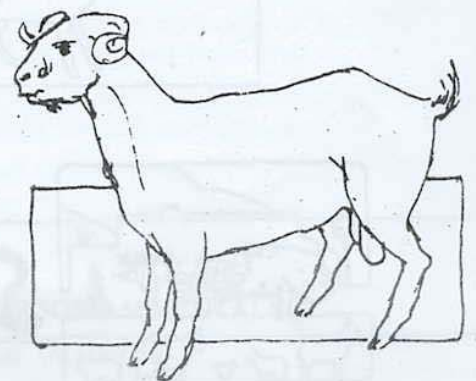
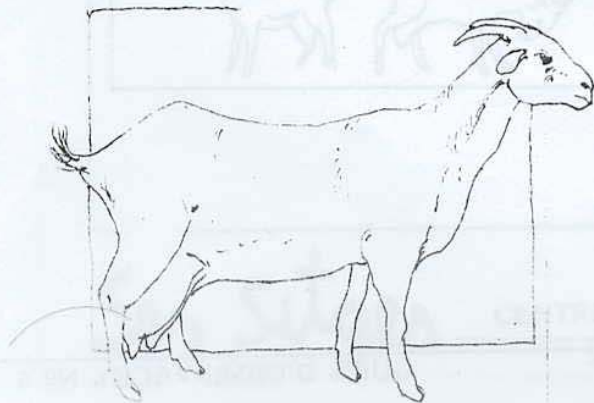
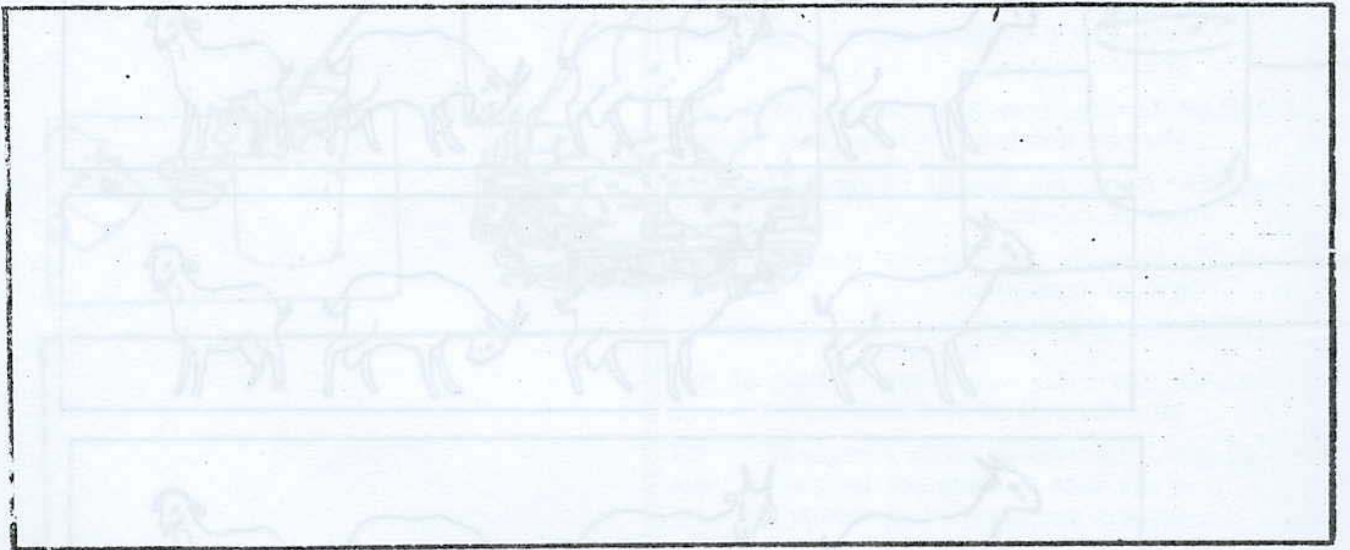
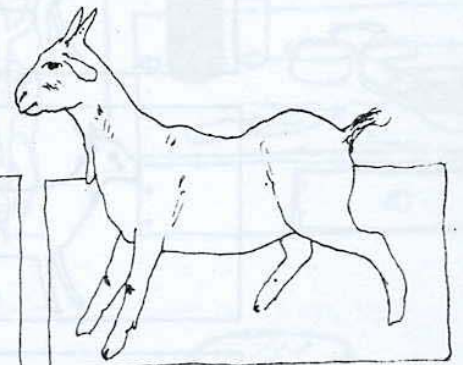
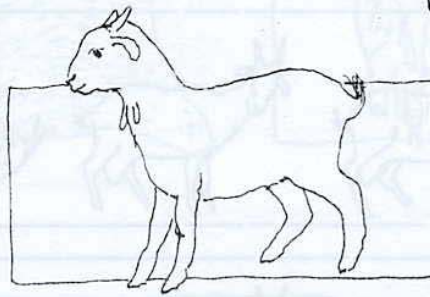
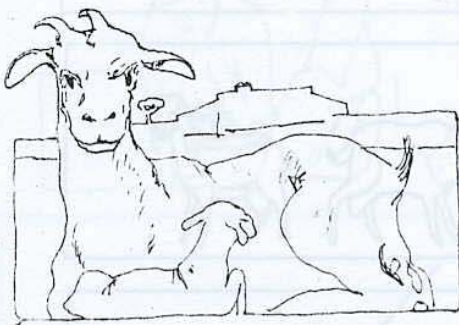
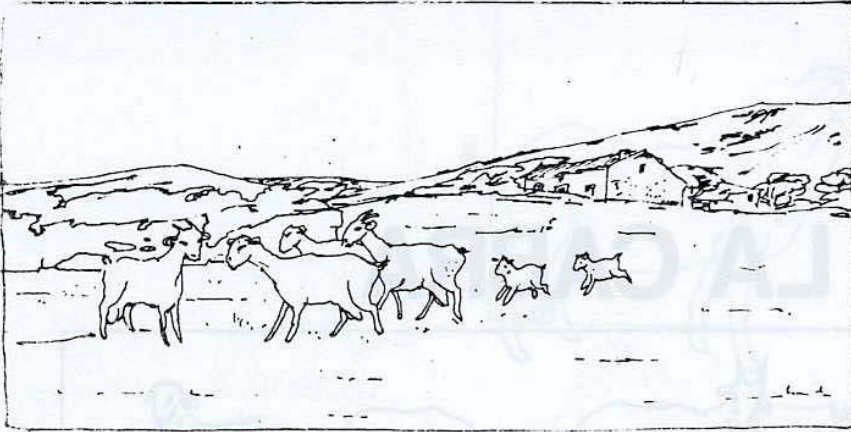


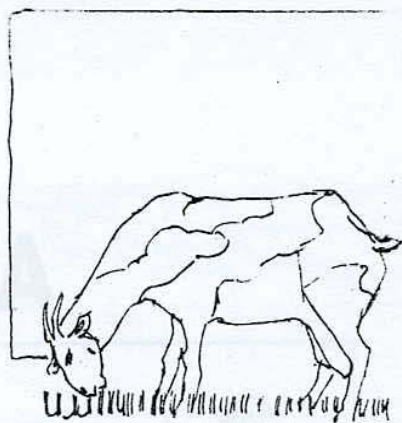
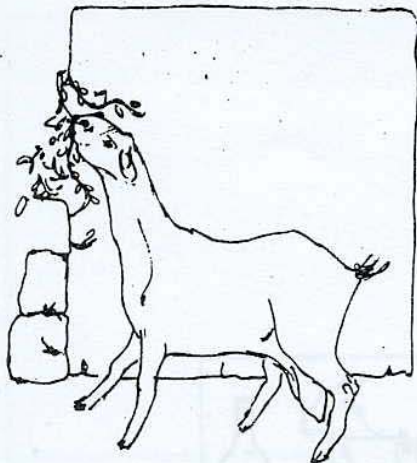
# LA CABRA



Ses sitges







## VOCABULARI

**BROSTA:** Conjunt de les branquetes més primes d'un o d'alguns arbres que mengen les cabres.

**CABRA:** Mamífer remugant caracteritzat pel seu pèl, normalment roig, fosc, i fort.

**CABRER:** Home que guarda un ramat (o guarda) de cabres.

**CABRIT:** Nadó de cabra des de que neix fins que el desmamen.

**CABRO (BOC):** Mascle de la cabra, adult.

**COLLAR:** Corretja, cadena que es posa al voltant del coll de la cabra.

**GOBI (var. dialectal de OBI):** Recipient fet d'una soca buidada per un costat que serveix per posar-hi el menjar de les cabres, ovelles, porcs...

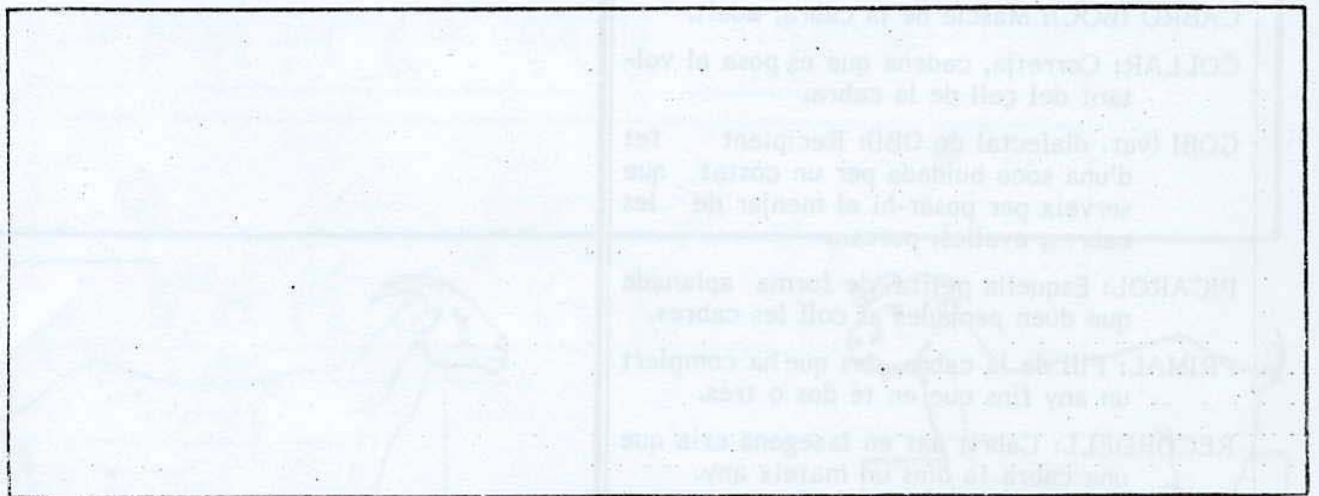
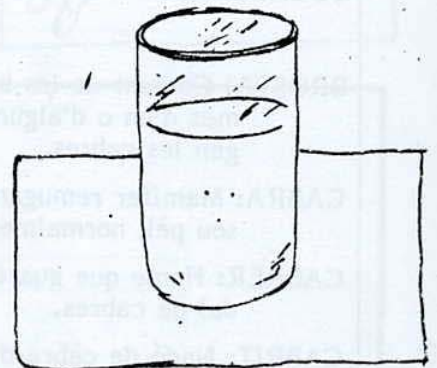
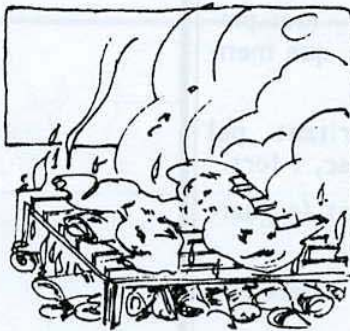
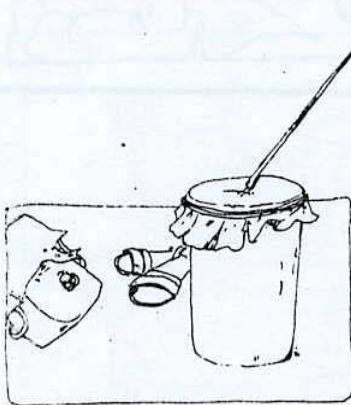
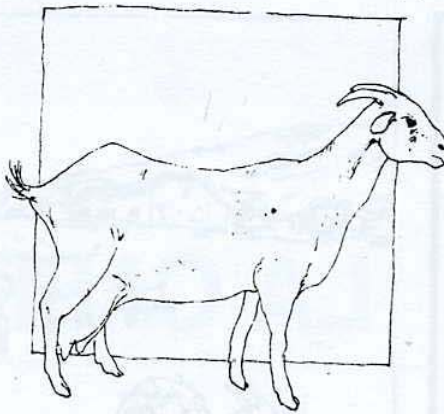
**PICAROL:** Esquilla petita de forma aplanada que duen penjades al coll les cabres.

**PRIMAL:** Fill de la cabra, des que ha complert un any fins que en té dos o tres.

**RECORDELL:** Cabrit nat en la segona cria que una cabra fa dins un mateix any.

**RECORDELLAR:** Fer recordell.

**SEGALL:** Nadó de cabra ja desmamat però que no ha acabat la seva creixença.



Ses Sitges

CENTRE EDUCATIU I DE RECURSOS AMBIENTALS

Sant Llorenç des Cardassar (Mallorca)